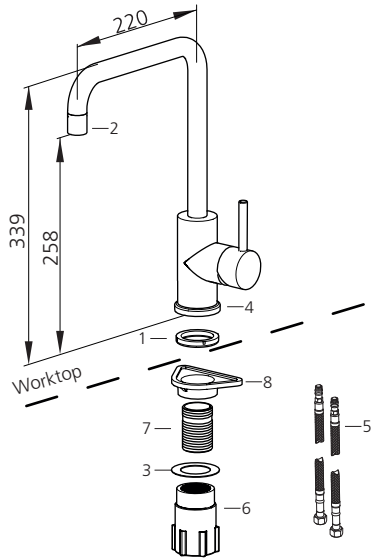


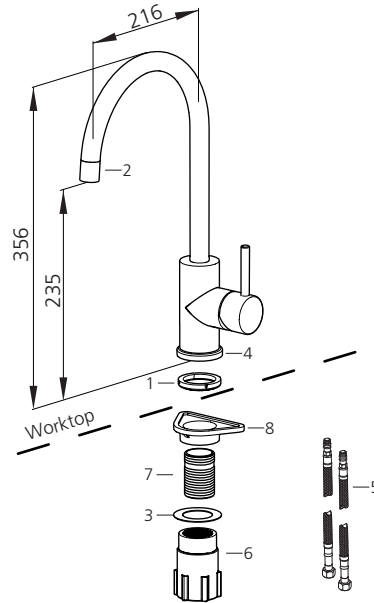
Single mixer faucet

TRAMONTINA

Angolare Export | 94520/022



Arko Export | 94520/021



Components

- 1- O-ring
- 2- Aerator
- 3- Metal washer (x2)
- 4- Surface flange
- 5- Flexible part (x2)
- 6- Quick connection nut
- 7- Connector thread
- 8- ABS washer

Warranty terms

- **TRAMONTINA** warranties this product sold by the company against any manufacturing defects for a total period of 10 years (120 months).
- The warranty period begins when the sales receipt is issued, which should be attached to these terms. The warranty is only valid if presented with the sales receipt
- The warranty includes replacement of parts and labor when repairing manufacturing defects verified by **TRAMONTINA**.
- O-rings, sealing mechanisms, gaskets, wedges, flexible parts, aerator, and ceramic cartridges, as well as labor used to apply the parts and consequences of such occurrences are not covered by the warranty.

THE WARRANTY WILL BECOME VOID IF:

- The use and care instructions outlined in this manual are not followed.
- The **Tramontina mixer faucet** is installed or used in disagreement with the Instructions Manual.
- The **Tramontina mixer faucet** has been misused or has not been cared for adequately (it shows scratch marks, deformities or similar damage as a result of misuse, as well as application of chemicals, abrasives or similar products which may damage the quality of the material or components).
- The defect was caused by an accident or product misuse by the customer.

THE WARRANTY DOES NOT COVER:

- Normal/natural wear.
- Malfunctioning or flaws resulting from interruptions to the water supply where the **Tramontina mixer faucet** is installed or oscillations of pressure and temperature.
- Damaged parts due to transport or handling accidents, dents, scratches, falls, or acts of nature, such as rain, flooding, etc.
- Transport to the definitive place of installation, parts, materials, and labor to prepare the place where the **Tramontina mixer faucet** will be installed, such as the hydraulic grid.
- Abnormal operation of the **Tramontina mixer faucet** resulting from lack of cleaning and excess residue, or even from objects stuck inside the faucet which are foreign to its operation and purpose.
- Use of water coming from a well to supply the running water distribution, as this water may contain dirt which might damage the product.
- If it is necessary to use materials not included with the product, as well as specific labor to prepare the place for installation, incurring expenses will be the sole responsibility of the customer.
- Transporting the product from the factory to the client's residence and vice-versa.
- Expenses related to the installation location.
- Expenses for service when no defect can be found, or expenses related to use guidelines that can be found in this instructions manual or on the product itself, may be charged to the customer.

WARRANTY CONDITIONS:

- Expenses incurred from the installation of parts not included with the **Tramontina mixer faucet** are the customer's responsibility.
- **TRAMONTINA**, due to the ongoing development of its products, reserves the right to alter general, technical, and aesthetic features without prior warning.
- Original replacement parts can be obtained from **TRAMONTINA**.
- Any necessary maintenance or adjustment work must be carried out with care and by qualified professionals.
- Any defects found with this product must be immediately communicated to Tramontina, whose contact and address is listed below.
- All parts with proven manufacturing defects and within the warranty period will be replaced free of charge, but the whole appliance will not be replaced.

ATTENTION!

- If the mixer faucet is installed directly in sinks/basins, using the ABS washer is essential. **FAILING to install this component will void the mixer faucet warranty and Tramontina will not be held liable for future problems with the mixer faucet or any products in which the mixer faucet is installed.**
- **Products installed for industrial, commercial, or public use are not covered under this warranty.**

installation

ATTENTION!

Before installing the mixer faucet, open the valve and let abundant water run to remove any dirt from the pipes.

- For a good performance, the pressure of hot and cold water must be the same.
- The mixer faucet should be installed at a point with minimum pressure of 5 mH₂O. and maximum pressure of 40 mH₂O. (mH₂O = meter of water column).
- Never use toxic products on the inlet threads.
- Connect flexible parts without sealing tape.
- **Avoid using wrenches** in the chrome-plated and/on stainless steel parts. If their use is needed, protect the part well.
- **Do not use wrenches on any flexible parts**, hand-tightening them is enough.
- The water temperature should not be above 90 °C.

All installation expenses are the client's responsibility. We recommend hiring a qualified professional to install the mixer faucet.

After installation, we recommend running the water for a few seconds, observing all connectors. After that, with the mixer faucet off, observe whether everything is properly sealed.

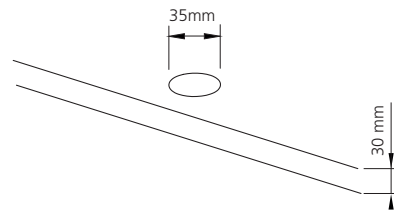
Note: The images in this manual are for illustration only. The manufacturer reserves the right to make changes to the products whenever they consider necessary, or in the user's interest, without modifying essential characteristics of operation and safety.

Components

- | | | |
|----------------------|-------------------------|--------------------------------|
| 1- O-ring | 5- Flexible part (x2) | 9- Nipple G 1/2" x 1/2" (x2) - |
| 2- Aerator | 6- Quick connection nut | Not included |
| 3- Metal washer (x2) | 7- Connector thread | |
| 4- Surface flange | 8- ABS washer | |

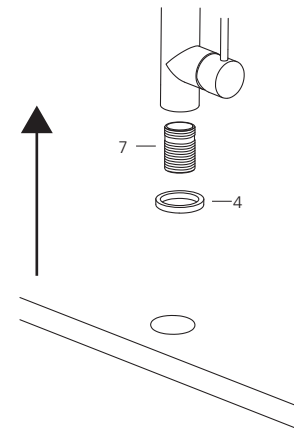
Mounting the mixer faucets

1.



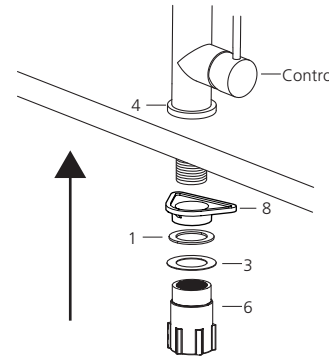
The hole dimension is Ø 35 mm, and the worktop must be no more than 30 mm thick.

2.



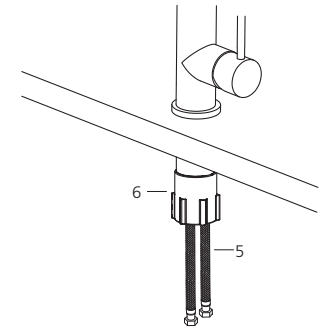
Attach the components in the same order as illustrated above.

3.



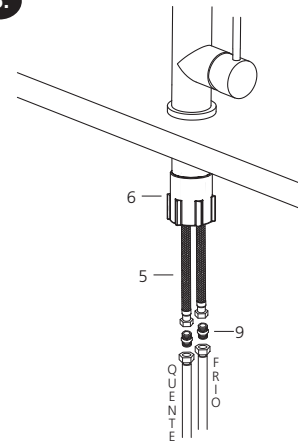
Attach the components in the same order as illustrated above. We recommend that the control remains to the right.

4.



Connect the flexible parts (5) to the mixer faucet, tightening them by hand. When threading them in, avoiding twisting the parts.

5.



Connect the flexible parts (5) to the water supply with the nipples (9).

Cleaning and care

- To clean the mixer faucet, use a soft cotton cloth, preferably dry. If necessary, use mild detergent/soap with a damp cloth. Rinse the detergent/soap completely with water and dry with a soft, dry cotton cloth.
- Never use steel wool pads, abrasive products, chemicals, or solvents to clean.
- We recommend keeping the item dry after each use to prevent accumulated water to dry on the product.
- Clean the aerator periodically by removing it from the mixer faucet and placing under running water in the direction opposite to the one it operates, or using a small brush. This will help maintain a good water flow.