

TAP

Sensetop - Electronic

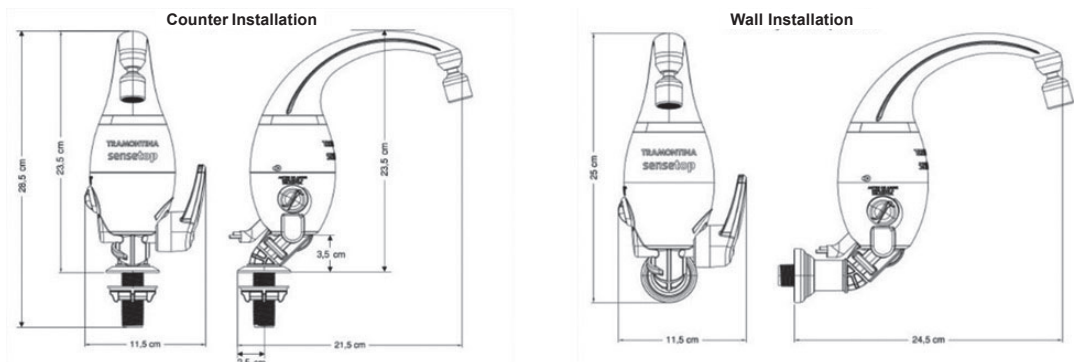
TRAMONTINA



TECHNICAL DESCRIPTIONS

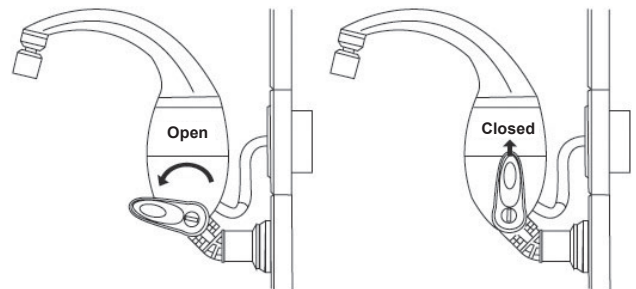
Rated Voltage	127 Vac	220 Vac
Rated Power	5500W	6500W
Circuit Breaker	50A	32A
Minimum Wiring	10mm²	4mm²
Minimum Consumption	1,01 kW.h/month	1,79 kW.h/month
Temperature Elevation	10°C	10°C
Flow	3L/min	3L/min
Maximum Consumption	2,62 kW.h/month	3,22 kW.h/month
Temperature Elevation	24,9°C	31°C
Flow	3L/min	3L/min
Maximum distance from shower to circuit breaker	27m [*]	27m [*]
Working Pressure	minimum	20 kPa [2 m.c.a]
	maximum	400 kPa [40 m.c.a]
Hydraulic Connection (inlet)	1/2" BSP Thread	
Ingress Protection Rating	IP24	
Maximum inlet water temperature	50°C	
Raw Material	Insulating metal and plastic materials	
[*] For distances greater than those indicated, use conductors with a larger section		
Compatible with DR device		
The resistivity of the water supplied for this product must not be less than 1300 Ω.cm		
Device in accordance with the standardization norm for electric taps ABNT_NBR 14011		
At a temperature of 22 °C		

DIMENSIONS

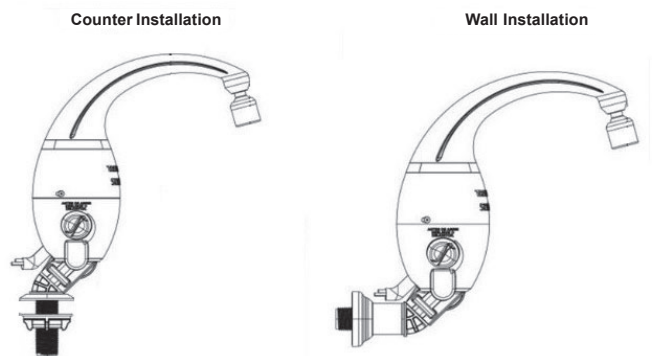


GENERAL INFORMATION

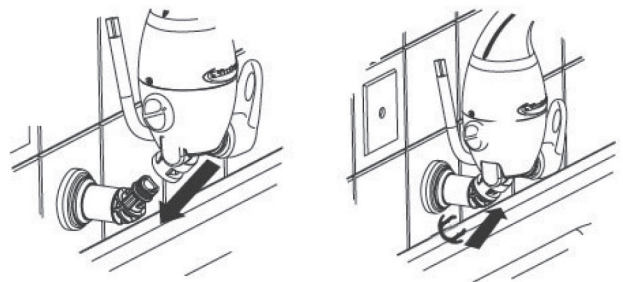
- Automatic safety lock for changing the heating element.
- More convenient and durable $\frac{1}{4}$ -turn ceramic register.



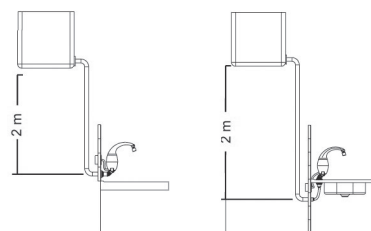
- Mobile spout with 360° swivel that provides greater convenience during use, especially in layouts with 2 sinks.
- Articulate aerator that facilitates use, does not spill, and saves water by adding air to it.
- Automatic pressure reducer that acts when necessary, mainly helping installations where there are large pressure variations throughout the day. The reducer will start operating whenever the pressure exceeds 8 m.c.a.
- Temperature can be changed with the valve open or closed.
- Dual positioning hydraulic adapter allows installation on the wall or on the counter, allowing the product to be installed in the kitchen and in the bathroom.



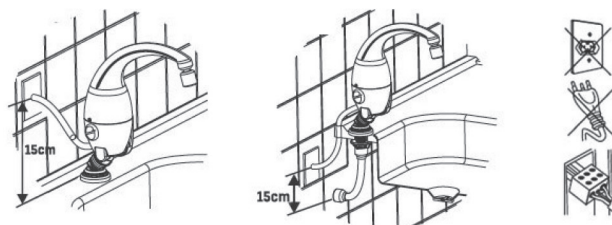
- Quick connect system does not require the use of tools to install the product.



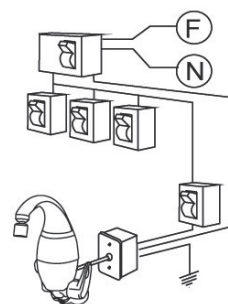
- The recommended height of the water tank for the device to work properly is 2 m above the water outlet point.



- The height of the tap wires connection box is at least 15 cm above the water outlet point and the connection must be made with appropriate connectors (preferably porcelain).



- The tap must be installed in an exclusive electrical circuit coming directly from the power distribution board and using conductors and circuit breakers of suitable capacity. The neutral and ground wires must be connected directly to their respective busbars in the distribution board, without any shunts in this path.



- The heating element and the device have a legal warranty of 3 months.
- Tramontina, in addition to the device 3 months of legal warranty, extends this period to another 9 months, totaling 1 year of warranty against any manufacturing defects counted from the invoice date. It is essential to present the invoice.
- The device must be installed by qualified personnel.